

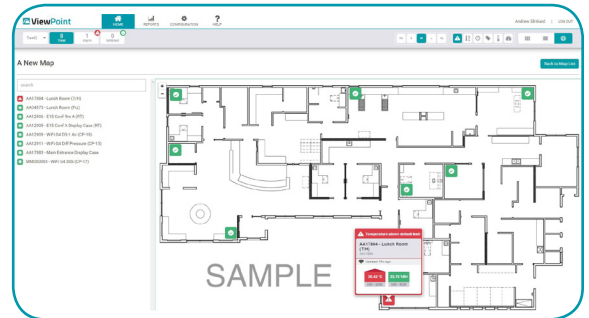
# ViewPoint Standard Vs. Pro

## ViewPoint Software is our most effective and easy-to-use software yet.

The newly designed interface allows you to view all of your assets at once with visual floor plan representation, saving valuable time when assets are at risk. Exploring the software is easier than ever, with the ability to view your inputs in our updated tile or list views, and a user-friendly Navigation Bar. Now, you can go back to the Home screen from anywhere in the software with one easy click. The Navigation Bar also offers quick access to commonly utilized tools:

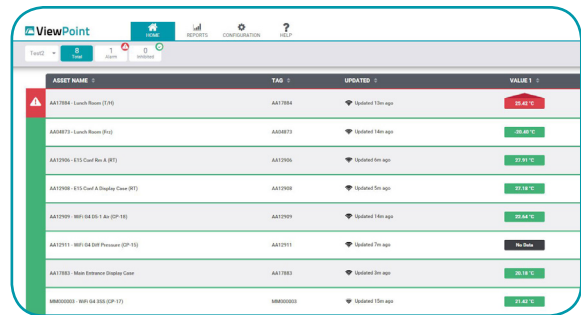
### Reports

Corrective Action History, Reading History, Current Readings, Summary Report, Audit Log, System configuration, Calibrations.



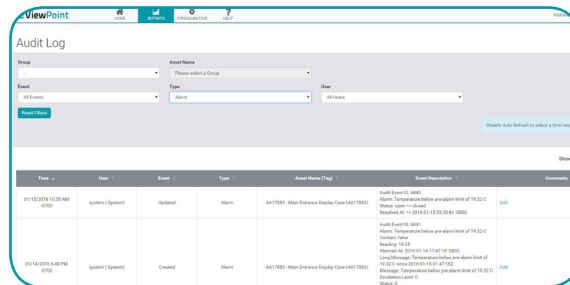
### Configuration

Programming Assets, Adding or Removing Users, Assets, Notification Lists, Schedules, Maps, System, Measurement Types, Alarm Lamps, Holidays, Calibrations and Access Points.



### Help

System information and help features.



Mesa has developed 2 versions of ViewPoint software, Standard and Pro, each designed to maximize the functionality for users. A single location with less than 100 units to monitor would be an ideal candidate for Standard, while Pro was developed with multi-location, larger installs in mind allowing for many more inputs and more flexibility in reporting, recording and display.

	Standard	Pro
Inputs	Up to 100	Up to 3000
Views	Tile and List View	Tile, List and Map View
Corrective Action Documentation	Select from pre-defined list	User-customizable options
Locations	Single	Multiple

## **Specifications**

### **Minimum Application Server Requirements:**

- Operating Systems: Windows Server 2008 R2, Windows Server 2008 R2 SP1, Windows Server 2012, Windows Server 2012 R2
- Processor: Intel – compatible processors with a minimum speed of 1.5 GHz
- RAM: 8 GB
- Hard Disk Space: 40 GB of Disk Space

### **Recommended Application Server Requirements:**

- Operating System: Windows Server 2008 R2, Windows Server 2008 R2 SP1, Windows Server 2012, Windows Server 2012 R2
- Processor: Intel- compatible processor with a minimum speed of 2 GHz or higher
- RAM: 16 GB
- Hard Disk Space: 120 GB of Disk Space on Solid State Drive

### **Supported Web-browsers:**

- Microsoft Internet Explorer IE 10 or higher
- Microsoft Edge v20.X or higher
- Google Chrome v44.X or higher
- Safari v 8 or higher
- Firefox v39.0 or higher
- Opera v32 or higher

### **Required Software Packages or Applications:**

- .NET 3.5
- .NET 4.5
- SQL Server Management Studio (Equivalent to SQL Server Version)

### **Packages Installed by Installer:**

- Java
- Ruby on Rails Framework
- TorqueBox
- SQL Server 2014 Express (Optional if utilizing separate version)